

Greenhouse Space for Lease

Short- and long-term rental opportunities



Overview

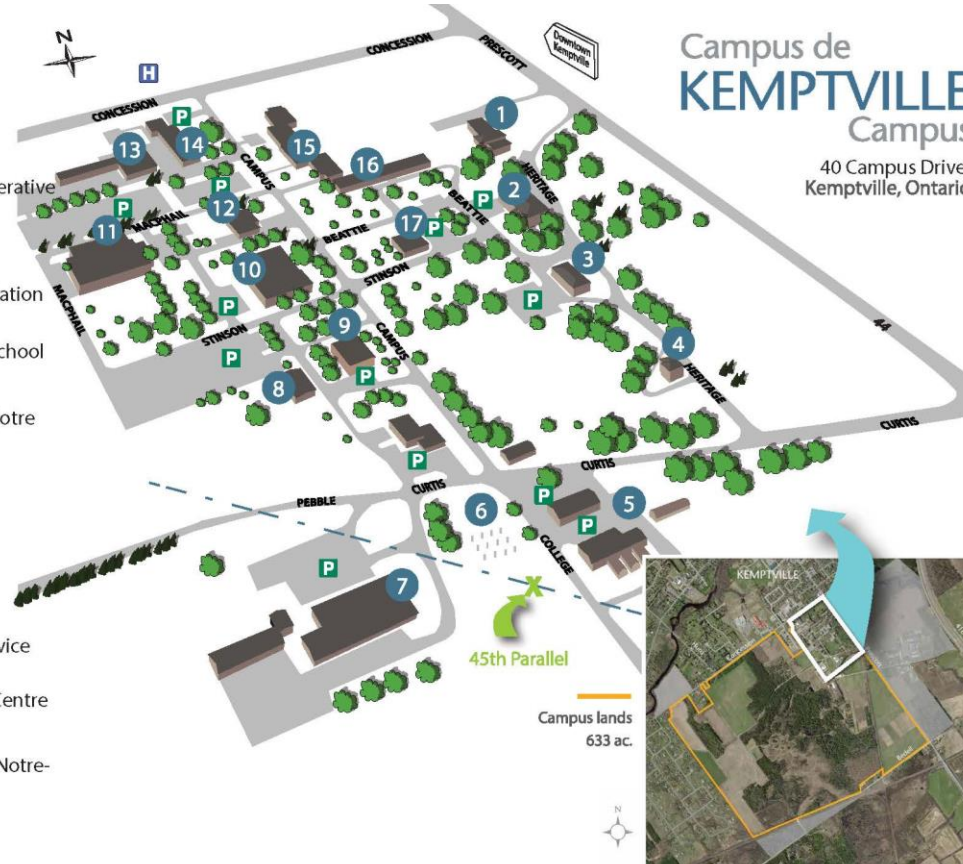
- About Kemptville Campus
- Available space
 - AJ Logsdail Greenhouse – Central Wing
 - AJ Logsdail Greenhouse – West Wing
 - AJ Logsdail Greenhouse – Garage/Storage Area
 - Polyhouse
 - AJ Logsdail Greenhouse – Central Classroom Area
- Greenhouse Floor Plans
- Application Process



Campus Map

Available for Rent: A.J. Logsdail Greenhouses

- 1 Heritage Hall
– Catered Affairs
- 2 Administration Building
– École Rivière Rideau
- 3 Purvis Hall - ACND
- 4 Leahurst – North Grenville Cooperative
Preschool
- 5 A.J. Logsdail
– Greenhouses
- 6 Environment Canada Weather Station
- 7 Power & Equipment - TR Leger School
- 8 Kemptville Live Music Festival
- 9 Fraser – l'Académie catholique Notre
Dame
- 10 F.J. Parish Hall - Campus office
- 11 W.B. George Centre
- 12 Animal Health Lab
– University of Guelph
- 13 Ontario Government
– OMAFRA
- 14 Ontario Government – MNR, Service
Ontario
- 15 Bell Hall - COVID Assessment Centre
- 16 Rorke – École Rivière Rideau
- 17 Gibson – l'Académie catholique Notre-
Dame

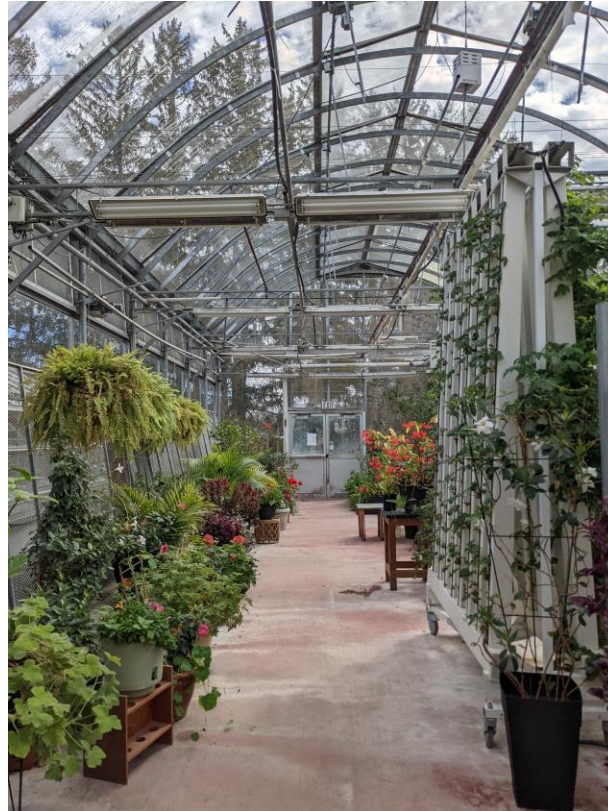


About Kemptville Campus

- Kemptville Campus was created by the Municipality of North Grenville as a not-for-profit with an arms-length board.
- Our mandate is to maintain and renew the former Kemptville Agricultural College as a mixed-use, multi-tenant education and community centre.
- The campus covers 630 acres of land including forests, wetlands, farmland, and a “village” of buildings and recreational facilities.
- The campus is located on the traditional territory of the Omàmiwinini (the Algonquin Anishinabek Nation).
- **Our work is guided by the pillars of education and training; health and wellness; and local economic development – all within an overarching framework of climate change resilience.**

AJ Logsdail Greenhouse – Central Wing

- Glass greenhouse – 1,709 sq. ft.
- Concrete floor, central heating, automated ventilation
- Easy-access water source and floor drainage
- Suitable for vertical growing, plant sales, community events, and more



AJ Logsdail Greenhouse – West Wing

- Space divided into two halves, each with heated grow benches suitable for seed starting
- North half (672 sq. ft.) features rolling benches in centre
- South half (650 sq. ft.) features in-ground growing bed in centre



AJ Logsdail Greenhouse – Garage/Storage Area

- Adjacent to glass greenhouses and central classroom
- Enclosed space with an overhead door
- Concrete floor
- Suitable for dry storage or as a packing station
- Two smaller rooms could be used for dry or cold storage

Polyhouse

- Brand new poly-covered steel greenhouse
- Available from Fall 2023
- 30 ft. by 96 ft. with central heating and ventilation fans with louvres.
- Floor can be finished to suit the tenant, including in-ground growing or installing a patio stone flooring and raised metal seedling tables.
- Includes water supply for irrigation

AJ Logsdail Greenhouse – Central Classroom Area

- Indoor space that connects the glass greenhouse wings, the garage area, washrooms, and a few small offices.
- Available for short-term rentals.
- Suitable for events, workshops, classes



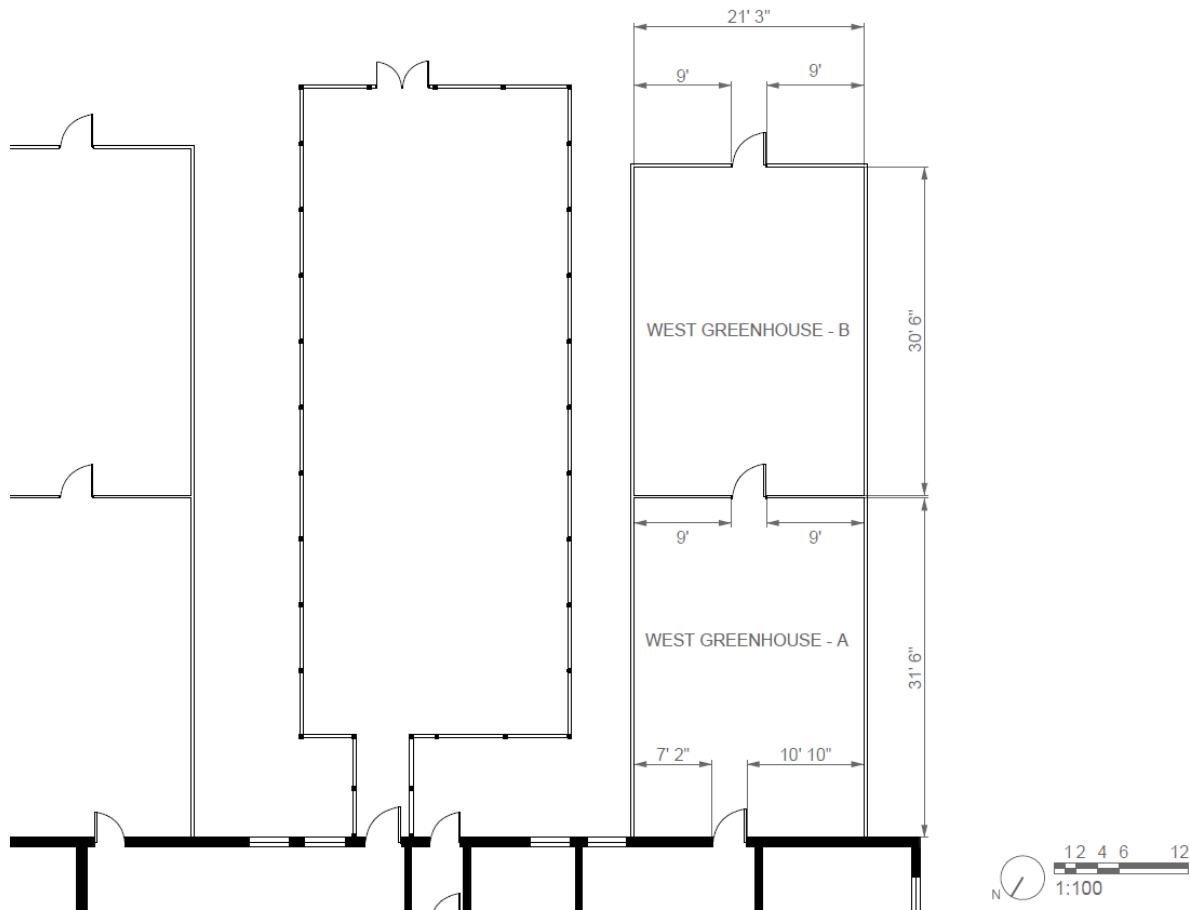
Floor Plan - Overview of Available Spaces

- A.J. Logsdail Greenhouse Plan
- Polyhouse not pictured here



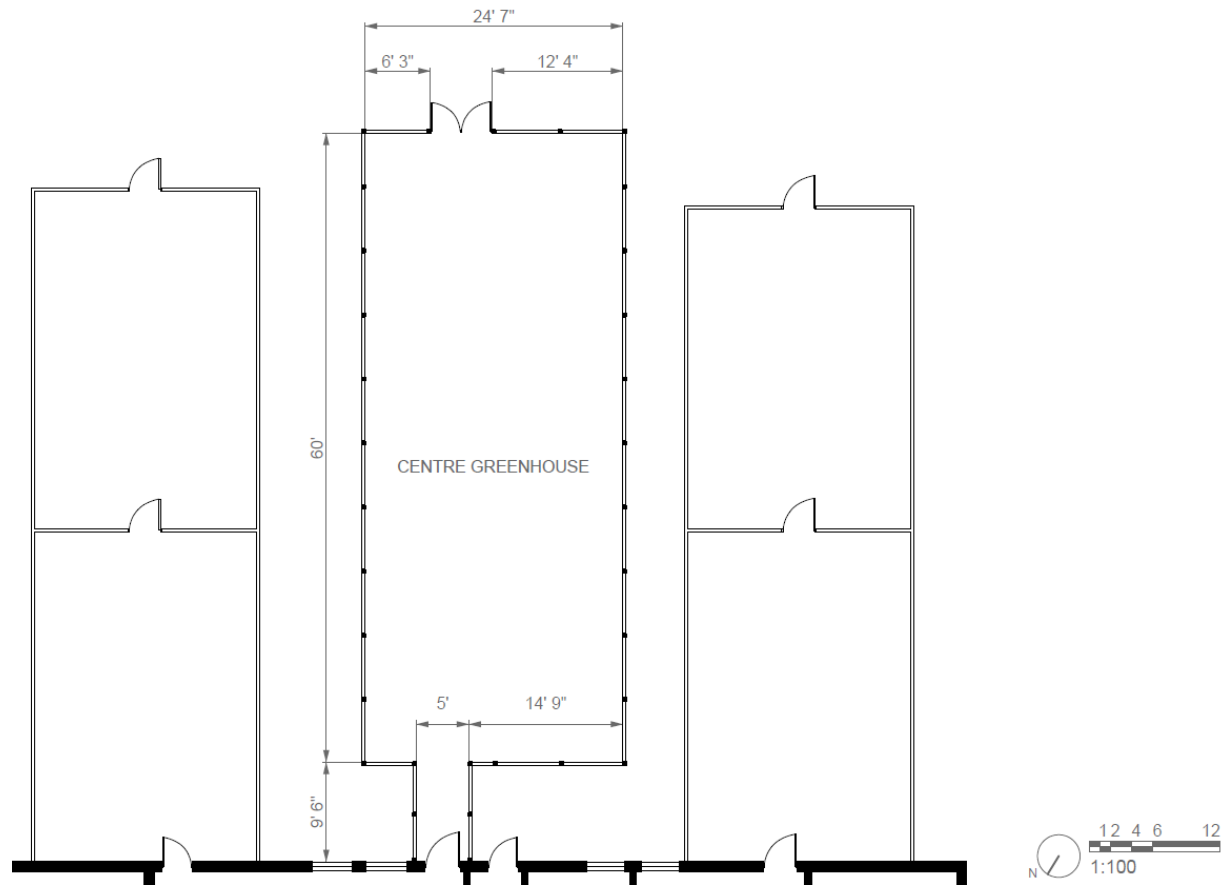
West Wing - Detailed View

- A.J. Logsdail Greenhouse – West Wing



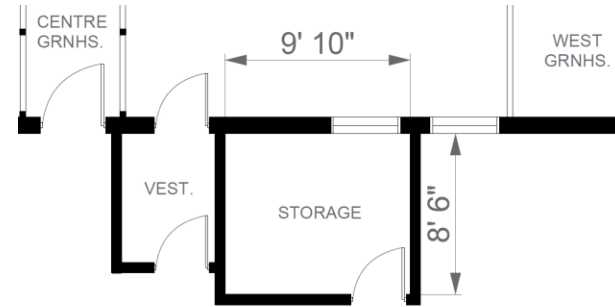
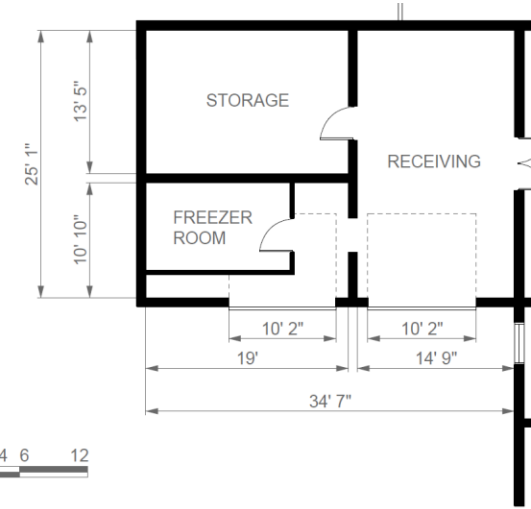
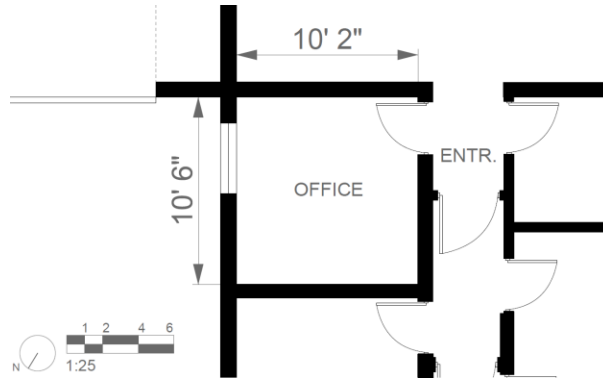
Centre Wing - Detailed View

- A.J. Logsdail Greenhouse – Central Wing



Garage/Storage and Offices – Detailed View

- A.J. Logsdail Greenhouse
 - Garage/Storage Area (top right)
 - Small storage room (lower right)
 - Office (lower left)



Application Process

- Please prepare a comprehensive proposal for the space required.
- Describe the proposed activities for the rented space.
- Specify your preferred space and any technical requirements.
- Indicate the start date and the expected duration of the tenancy.
- Present your proposed pricing structure.
- **For further details, refer to the attached RFP document:**

[RFP Greenhouse](#)

Proposal Submission Deadline

- Proposals will start being reviewed in mid-August, but Campus will continue accepting proposals until spaces are filled.



Thanks for your interest!

Contact us:

Leela Ramachandran

Project Manager, Training
and Local Food

[Lramachandran@Kemptville
campus.ca](mailto:Lramachandran@Kemptvillecampus.ca)

613-258-8336 ext. 4

www.KemptvilleCampus.ca

